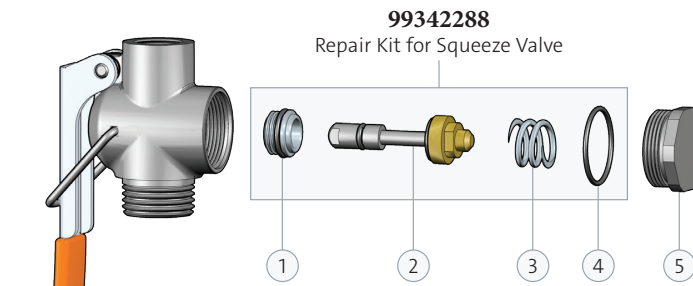


## Squeeze Valve Components

○ **99282538** Squeeze Valve with Locking Clip. 3/8" NPT Female Outlet.

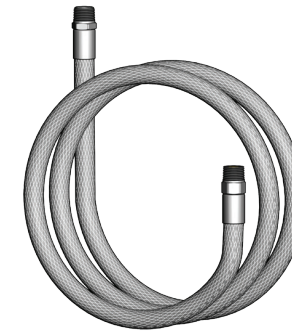
*Note: Prior to 2002, Guardian manufactured the AP600-220-3 squeeze valve. This valve had an integral (non-removable) valve seat. In 2002, Guardian replaced this valve with the AP600-240 valve with a replaceable stainless steel valve seat. All eyewash/drench hose units and drench hose units manufactured after 2002 utilize the AP600-240 squeeze valve.*



ITEM	PART NO.	DESCRIPTION
1	<b>99778883</b>	Valve Seat and O-Ring Assy. (pkg of 6)
2	<b>99126825</b>	Valve Plunger Assy. (pkg of 6)
3	<b>99442748</b>	Spring (pkg of 6)
4	<b>99126826</b>	Bonnet O-Ring (pkg of 6)
5	<b>99442749</b>	Valve Bonnet (pkg of 6)



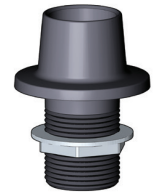
## Eyewash/Drench Hose and Drench Hose Components



**99110891**  
8 ft. reinforced PVC hose for eyewash/  
drench hose and drench hose units.  
3/8" NPT male swivel inlet,  
3/8" NPT male outlet.



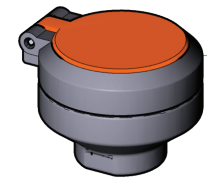
**99802989**  
Molded nylon handle for  
eyewash/drench hose and  
drench hose units.



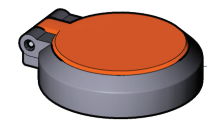
**99043110**  
Molded nylon deck flange for  
eyewash/drench hose and drench  
hose units. 1" IPS mounting shank.

## Spray Heads

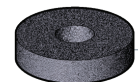
○ **GS-Plus™ Spray Head**



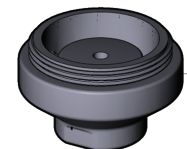
**99041737**  
GS-Plus™ Spray Head.  
1-1/2" Diameter.  
1/4" NPT female inlet.



**99310266**  
1-1/2" Diameter Spray  
Cover with "Flip Top"  
Dust Cover (pkg of 2)



**99061611**  
1-1/8" Diameter Foam  
Filter (pkg of 6)

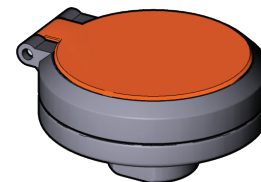


**99360634**  
GS-Plus™ Spray Head  
Body (pkg of 6)

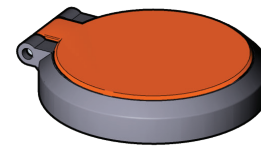


**99031958**  
1.6 Gallon Per Minute  
Flow Control  
(pkg of 6)

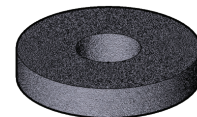
○ **FS-Plus™ Spray Head**



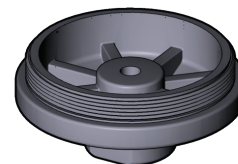
**99273067**  
FS-Plus™ Spray Head.  
2-1/8" Diameter.  
1/4" NPT female inlet.



**99045435**  
2-1/8" Diameter Spray  
Cover with "Flip Top"  
Dust Cover (pkg of 2)



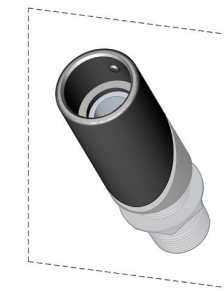
**99250766**  
1-3/4" Diameter Foam  
Filter (pkg of 6)



**99820862**  
FS-Plus™ Spray Head  
Body (pkg of 6)



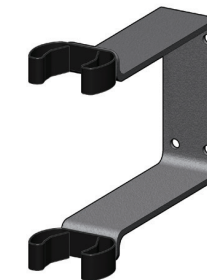
**99410420**  
3.2 Gallon Per Minute  
Flow Control (pkg of  
6)



**99635536**  
45 degree panel flange for eyewash/  
drench hose and drench hose units.  
3/4" IPS mounting shank.



**99125275**  
Wall Bracket for  
Eyewash/Drench Hose Units



**99381428**  
Wall Bracket for  
Eyewash/Drench Hose Units



**99273083**  
Wall Hook for  
Drench Hose Units



**99456908**  
8-1/2" x 11" plastic sign



**99904696**  
8-1/2" x 11" plastic sign



Phone: (800) 448-6710

BEST PLUMBING SPECIALTIES

www.BestPlumbingSpecialties.com